

1

Controllers



OCT- 00

High pressure timing controller

1.01



OCT- 01

Ultra high-pressure single controller

Single control

1.02



OCT- 02

Double track ultra high-pressure controller

Double control

1.03

OCT- 00 - ...

High pressure timing controller (small)

Trigger method : 4-6kg(0.4 - 0.6 MPa) pressed air in-put, 220V single phase electricity.

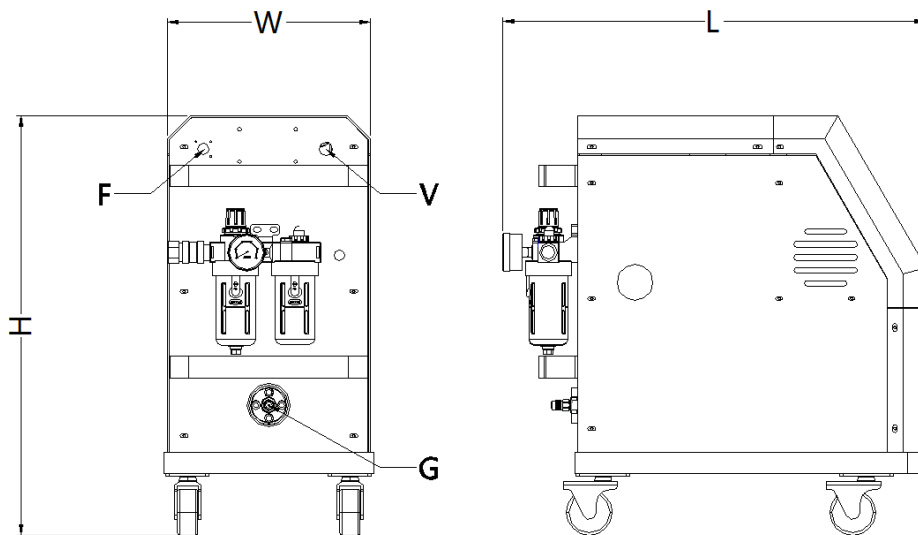
Oil requirement: #46 or #68 hydraulic oil, total 1 L.

Suitable gate rage: suitable for less than 4 gates, and gate width less than 6mm.

Suitable injection machine range: 100-ton machine, single color injection machine.

Output pressure: 0 - 600kg (0 - 60 MPa)

Machine weight: 35kg



L (mm)	W (mm)	H (mm)	V	G (mm)	F	Nr.-NO.
550	290	580	220V	M14*1.5	Single signal	OCT-00-1000

OCT- 01 - ...

Ultra high-pressure single controller (single)

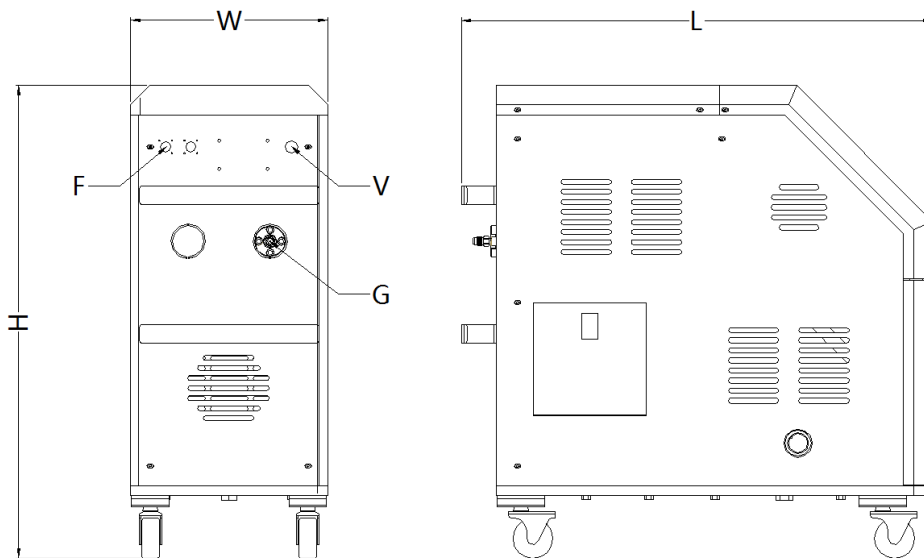
Trigger method : 380V 3-phase electricity. I=3.4A, P=0.75kW.

Oil requirement: 46# or 68# hydraulic oil, total 13 L.

Output pressure: 0 ~1000kg (0 ~100 MPa)

Gear pump: 3.8L/min

Machine weight: 110kg



L (mm)	W (mm)	H (mm)	V	G (mm)	F	Nr.-NO.
680	300	750	380V	M14*1.5	Single signal	OCT-01-1000

OCT- 02 - ...

Double track ultra high-pressure controller (double)

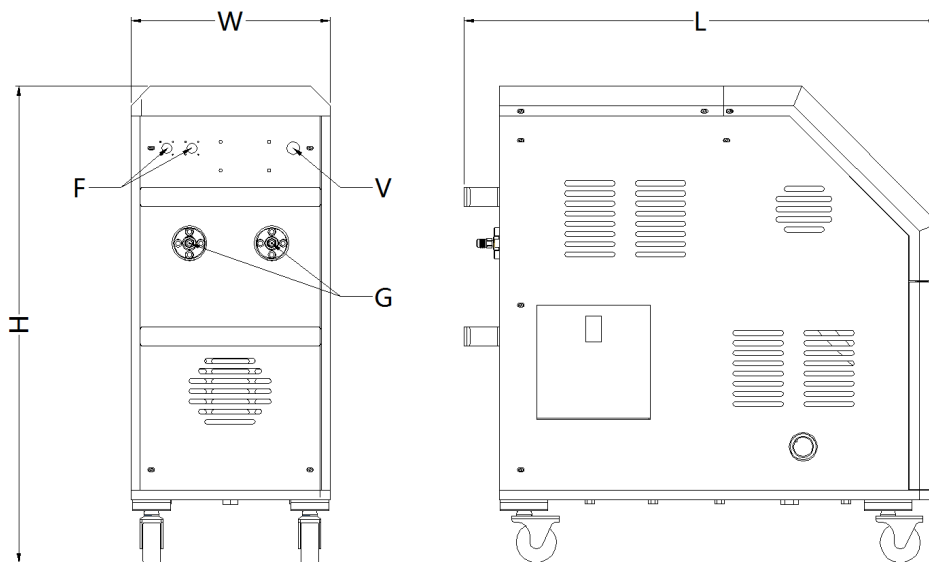
Trigger method : 380V 3-phase electricity. I=3.4A, P=0.75kW.

Oil requirement: 46# or 68# hydraulic oil, total 13 L.

Output pressure: 0 ~1000kg (0 ~100 MPa)

Gear pump: 3.8L/min

Machine weight: 150kg



L (mm)	W (mm)	H (mm)	V	G (mm)	F	Nr.-NO.
680	300	750	380V	M14*1.5	Double group signal	OCT-02-1000

2

Standard parts



OCT- 03 - ... 2.01

Round connector
Mat.: S55C



OCT- 06 - ... 2.04

Air nipple
(air exhaust)
Mat.: S55C



OCT- 04 - ... 2.02

Connector
Mat.: S55C



OCT- 07 - ... 2.05

3-way oil nipple
Mat.: S55C



OCT- 05 - ... 2.03

Oil nipple
Mat.: S55C



OCT- 08- ... 2.06

Coupling head for oil-
tube (female)
Mat.: S55C

2

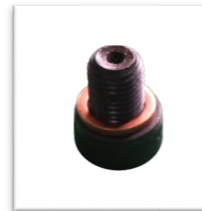
Standard parts



OCT- 09- ... 2.07

Coupling head for oil-tube (male)

Mat.: S55C



OCT- 12 - ... 2.10

Oil plug
(Matrix screw +
copper ring)

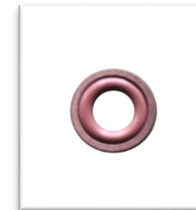
Mat.: HJ



OCT- 10 - ... 2.08

Cylinder

Mat.: Beryllium copper



OCT- 13 - ... 2.11

Double layer Seal (O-ring)

Mat.: HJ



OCT- 11 - ... 2.09

Standard cutter

Mat.: SKH51

REMARK:HRC58~62



OCT- 14- ... 2.12

Spring

Mat.:

2

Standard parts



OCT- 15 - ... 2.13

Cutter holder block

Mat.: S55C



OCT- 18 - ... 2.16

Signal cable

Mat.: HJ



OCT- 16 - ... 2.14

Limit switch

Mat.: HJ



OCT- 19 - ... 2.17

Coupling head oil-tube

Mat.: HJ



OCT- 17 - ... 2.15

Switch block

Mat.: S55C



OCT- 20- ... 2.18

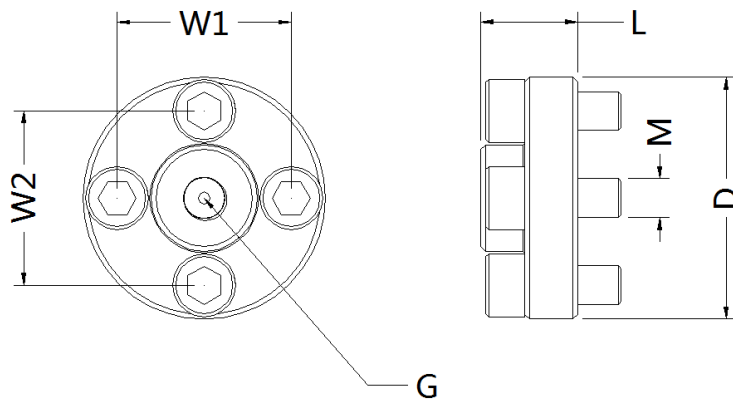
Oil-tube

Mat.: HJ

OCT- 03 - ...

Round connector

Mat.: S55C

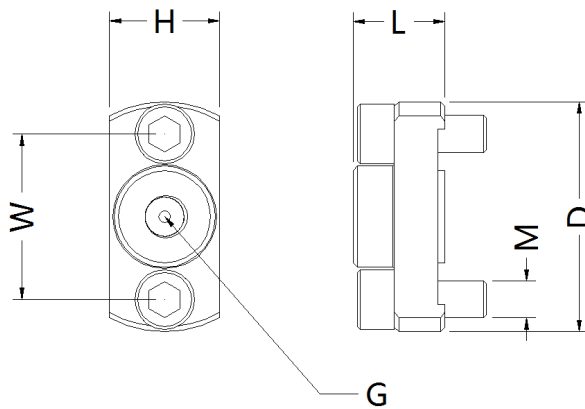


D (mm)	W1,W2 (mm)	M (mm)	G (mm)	L (mm)	Nr.-NO.
50	36	M8*1.25	M10*1	20	OCT-03-D50-L20

OCT- 04 - ...

Connector

Mat.: S55C



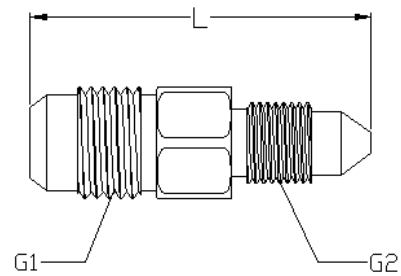
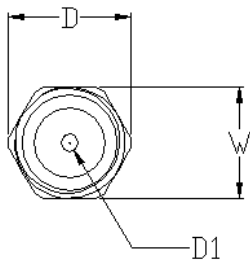
D (mm)	W (mm)	H (mm)	M (mm)	G (mm)	L (mm)	Nr.-NO.
50	36	24	M8*1.25	M10*1	20	OCT-04-D50-L20

OCT- 05 - ...

Oil-way nipple

Mat.: S55C

Function: Supply oil to mold. Connector to oil-tube / hose.



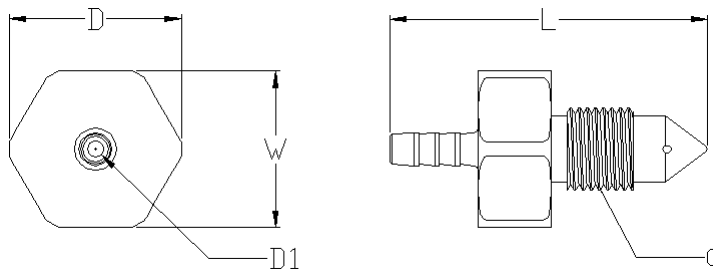
D (mm)	W (mm)	D1 (mm)	G1 (mm)	G2 (mm)	L(mm)	Nr.-NO.
16	14	2.2	M14*1.5	M10*1	37	OCT-05-D16-L37
19	17	2.2	G1/4-19	M10*1	43	OCT-05-D19-L43

OCT- 06 - ...

Bleeder (air nipple / air exhaust)

Mat.: S55C

Function: Lose this bleeder to let air in the old oil-way out. After air is purged, then tighten the bleeder. Ensuring optimal pressure inside the mold.

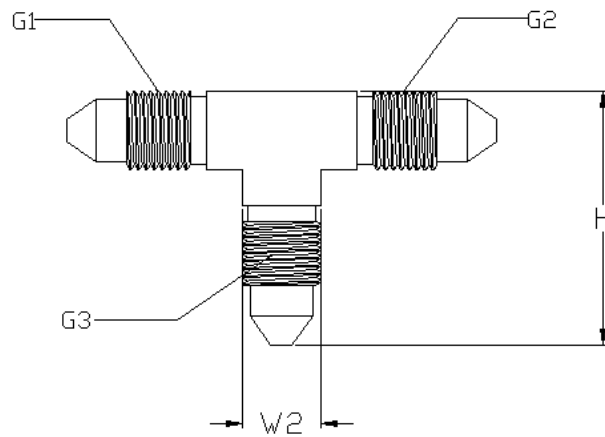
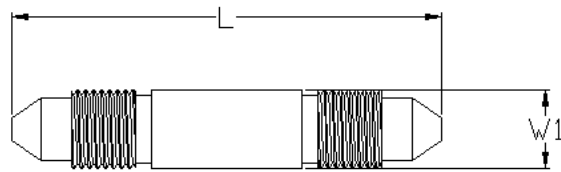


D (mm)	W (mm)	D1 (mm)	G (mm)	L (mm)	Nr.-NO.
21	19	2	M10*1	39	OCT-06-D21-L39

OCT- 07 - ...

3-way oil nipple

Mat.: S55C

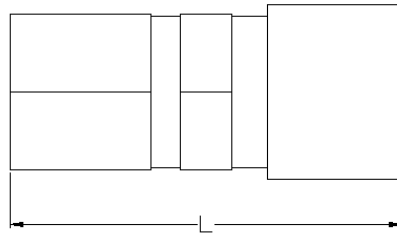
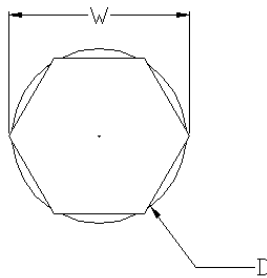


L (mm)	W1 (mm)	W2 (mm)	G1,G2,G3 (mm)	H (mm)	Nr.-NO.
54	10	10	M14*1.5	32	OCT-07-L54-H32

OCT- 08 - ...

Coupling head for oil-tube (female)

Mat.: S55C

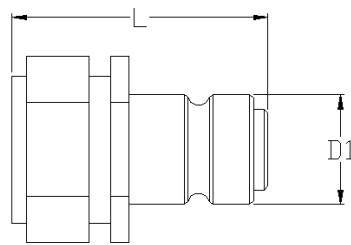
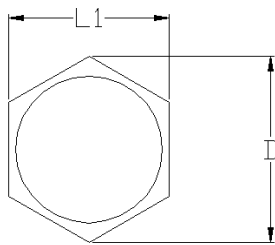


D (mm)	W (mm)	L(mm)	Nr.-NO.
27	28	61	OCT-08-D27-L61

OCT- 09- ...

Coupling head for oil-tube (male)

Mat.: S55C



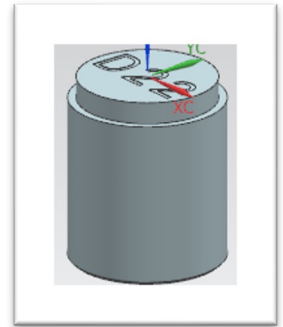
D (mm)	D1 (mm)	L (mm)	L1 (mm)	Nr.-NO.
25	15	37	22	OCT-09-D25-L37

OCT- 10 - 1 ...

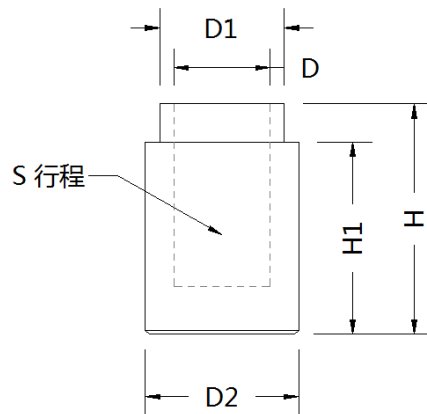
Cylinder OCLD

Mat.: Beryllium copper

HRC55~58



OCLD



D (mm)	D1 (mm)	D2 (mm)	H (mm)	H1 max (mm)	S max (mm)	Nr.-NO.
8	11	14	20	16	2.5	OCLD-8
10	13	16	24	20	3	OCLD-10
12	15	18	24	20	3.5	OCLD-12
14	17	20	30	26	4	OCLD-14
16	19	22	30	26	5	OCLD-16
22	25	28	34	30	6	OCLD-22

OCT- 10 - 2 ...

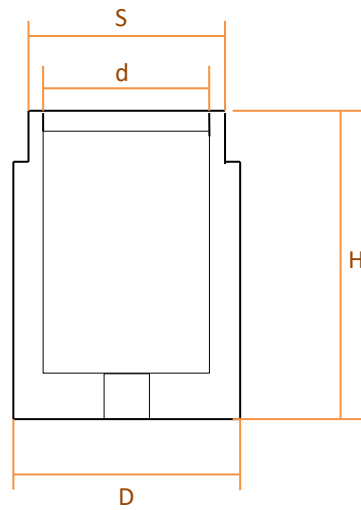
Cylinder TCLD

Mat.: Beryllium copper

HRC55~58



TCLD



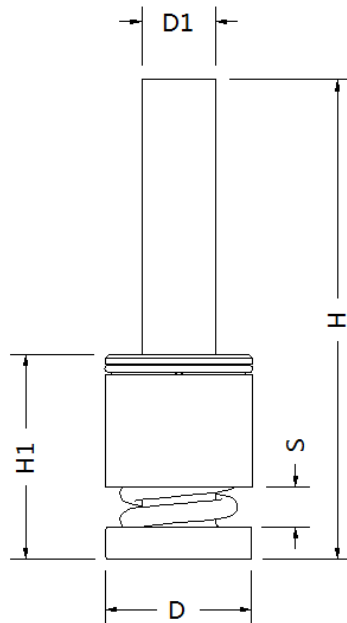
D (mm)	d (mm)	H (mm)	S (mm)	Stroke max (mm)	Nr.-NO.
18	12	34	17	3.5	TCLD-12
20	14	34	19	4	TCLD-14
22	16	34	21	4.5	TCLD-16
28	22	40	27	6	TCLD-22
34	25	41	30	6	TCLD-25

OCT- 11 - ...

Standard cutter

Mat.: SKH51

REMARK:HRC58~62

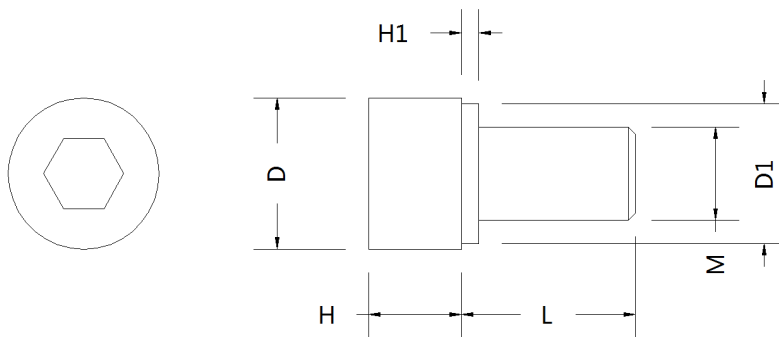


D 1(mm)	D (mm)	H (mm)	H1 max (mm)	S max (mm)	Nr.-NO.
4	12	60	20.5	2	STD-4
6	16	60	20.5	2	STD-6
8	19	80	25.5	4	STD-8
10	20	80	27.5	5.5	STD-10
12	24	80	30	4.5	STD-12
16	32	120	35	5	STD-16

OCT- 12- ...

Oil-plug (matrix screw + copper ring)

Mat.: HJ

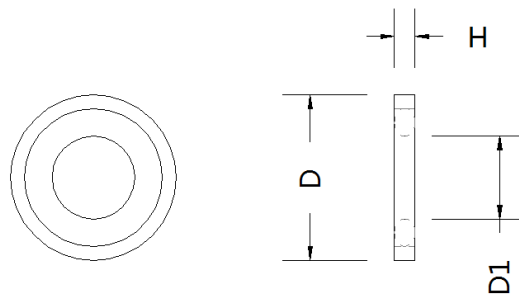


D (mm)	H (mm)	D1 (mm)	H1 (mm)	L (mm)	M (mm)	Nr.-NO.
5.5	3	5	1	10	M3*0.5	OCT-12-M3-L10
7	4	6	1	10	M4*0.8	OCT-12-M4-L10
8.5	5	8	1	10	M5*0.8	OCT-12-M5-L10
10	6	10	1.5	10	M6*1	OCT-12-M6-L10
13	8	12	2	10	M8*1.25	OCT-12-M8-L10
16	10	16	2	15	M10*1.5	OCT-12-M10-L15

OCT- 13- ...

Double layer seal (O-ring)

Mat.: HJ

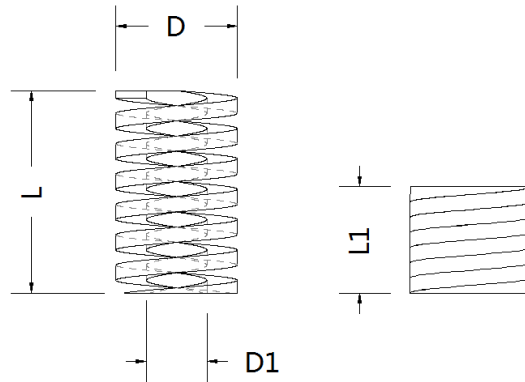


D (mm)	D1 (mm)	H (mm)	Nr.-NO.
10	4	1.5	OCT-13-D10
12	6	1.5	OCT-13-D12

OCT- 14- ...

Spring

Mat.:S55C



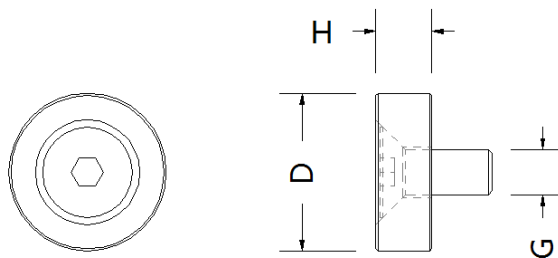
D (mm)	L (mm)	L1 (mm)	D1 (mm)	Nr.-NO.
6	15	12.5	3	OCT-14-D6-L15
8	15	12.5	4	OCT-14-D8-L15
	20	16.5		OCT-14-D8-L20
	25	20.5		OCT-14-D8-L25
	15	12.5		5
20	16.5	OCT-14-D10-L20		
25	20.5	OCT-14-D10-L25		
12	15	12.5	6	OCT-14-D12-L15
	20	16.5		OCT-14-D12-L20
	25	20.5		OCT-14-D12-L25

D (mm)	L (mm)	L1 (mm)	D1 (mm)	Nr.-NO.
14	20	16.5	7	OCT-14-D14-L20
	25	20.5		OCT-14-D14-L25
16	20	16.5	8	OCT-14-D16-L20
	25	20.5		OCT-14-D16-L25
18	20	16.5	9	OCT-14-D18-L20
	25	20.5		OCT-14-D18-L25
20	20	16.5	10	OCT-14-D20-L20
	25	20.5		OCT-14-D20-L25
22	25	20.5	11	OCT-14-D22-L25
	30	34.5		OCT-14-D22-L30

OCT- 15- ...

Cutter holder block

Mat.: S55C

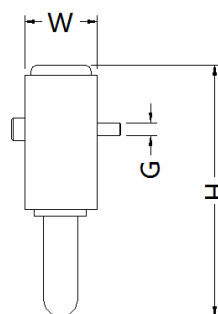
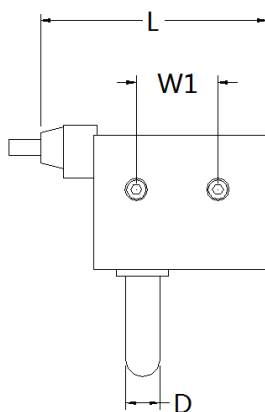


D (mm)	H (mm)	G (mm)	Nr.-NO.
14 / 16	5	M4 / M5 *0.8	OCT-15-D14

OCT- 16- ...

Limit switch

Mat.: HJ

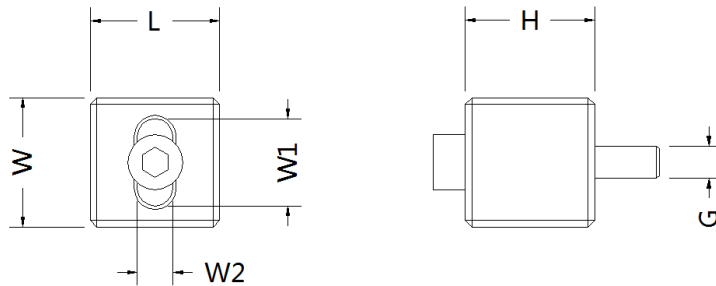


L (mm)	W (mm)	H (mm)	W1 (mm)	G (mm)	D (mm)	Nr.-NO.
70.5	22.6	78.3	25.4	M4*0.8	10	OCT-16-D10

OCT- 17- ...

Switch block

Mat.:S55C

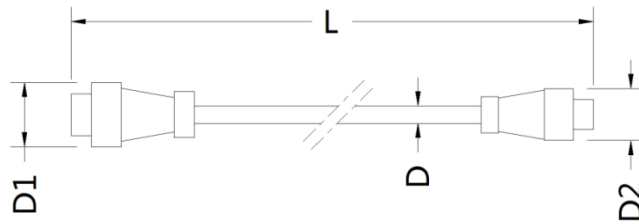


L (mm)	W (mm)	H (mm)	W1 (mm)	W2 (mm)	G (mm)	Nr.-NO.
20	20	20	13.5	5.5	M5*0.8	OCT-17-W20

OCT- 18- ...

Signal cable

Mat.: HJ

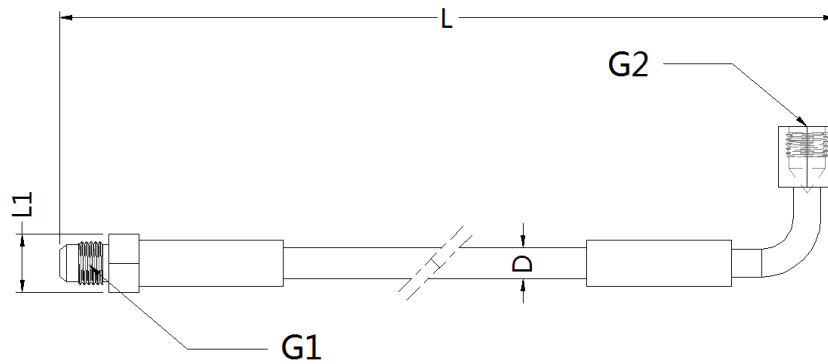


L (mm)	D (mm)	D1 (mm)	D2 (mm)	Nr.-NO.
4000	6	22.5	18	OCT-18-L4000

OCT- 19- ...

Coupling head super high pressure oil tube

Max pressure: 2000 Bar

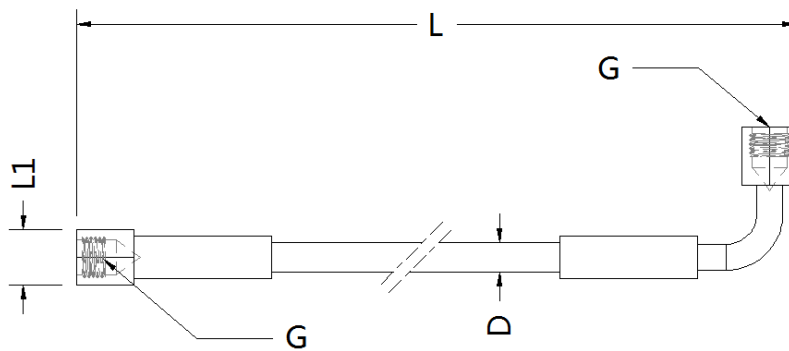


L (mm)	L1 (mm)	G1 (mm)	G2 (mm)	D (mm)	Max (KG)	Nr.-NO.
1000	19	G1/4-19	M14*1.5	10	2000	OCT-19- L500-2000
4000	19	G1/4-19	M14*1.5	10	2000	OCT-19-L4000-2000

OCT- 20- ...

Super high pressure oil tube

Max pressure: 2000 Bar



L (mm)	L1 (mm)	G (mm)	D (mm)	Max (KG)	Nr.-NO.
4000	19	M14*1.5	10	2000	OCT-20-L4000-2000

3

In-mold parts



OCT- 21 - ... 3.01

Cutter guide block

Mat.: SKD61



OCT- 22 - ... 3.02

Cutter

Mat.: SKD61



OCT- 23 - ... 3.03

OCLD Cylinder plate

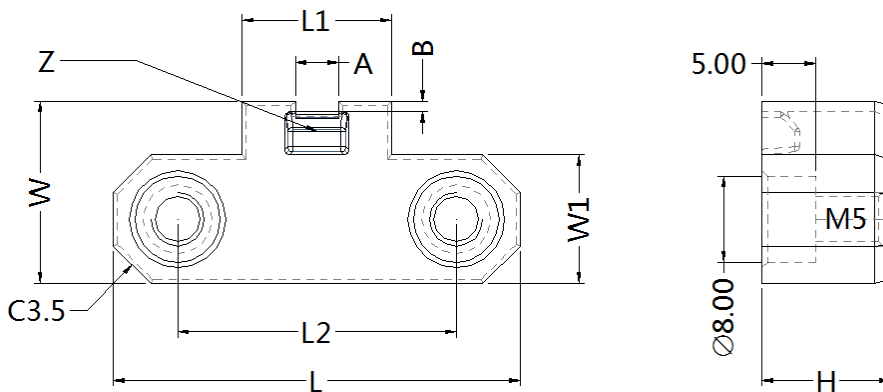
Mat.: P20

OCT- 21- ...

Cutter guide block

Mat.: SKD61

“Z”: Gate area will be designed based on part shape.



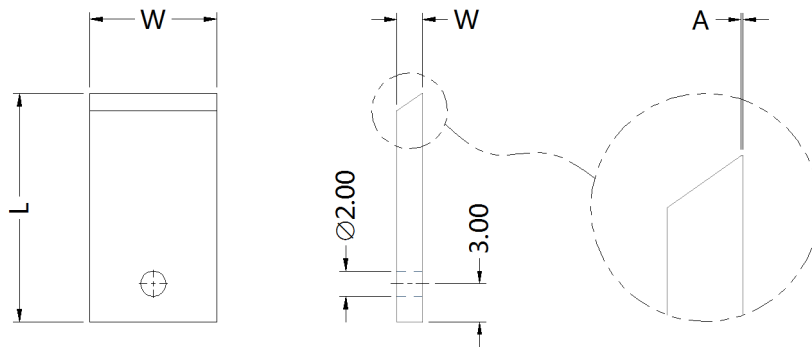
L(mm)	W(mm)	H(mm)	L1(mm)	L2(mm)	W1 (mm)	A (mm)	B (mm)	Nr.-NO.
38	17	12	14	26	12	4	2	OCT-21-A4-B2
38	17	12	14	26	12	5	2	OCT-21-A5-B2
38	17	12	14	26	12	6	2	OCT-21-A6-B2
40	17	14	16	28	12	8	2	OCT-21-A8-B2
42	17	16	18	30	12	10	2	OCT-21-A10-B2
44	17	18	20	32	12	12	2	OCT-21-A12-B2
46	17	20	22	34	12	14	2	OCT-21-A14-B2
48	17	22	24	36	12	16	2	OCT-21-A16-B2

OCT- 22- ...

Customized cutter

Mat.: SKD61

“A”: Cutter blade top width depends on mold structure. Cutter end is not recommended to be made sharp, despite better result, due to shorter cutter lifetime. Normally we design top width 0.05-0.1mm, resulting in 50K-100K shots lifetime. Flatter top width of 0.1-0.2mm increases lifetime to around 100K-150K shots. Top width 0.2mm has lifetime of 150K-200K shots.



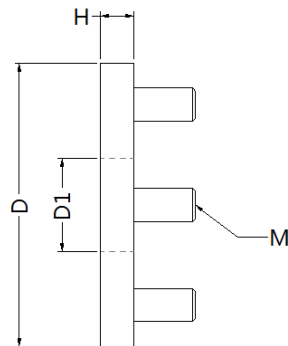
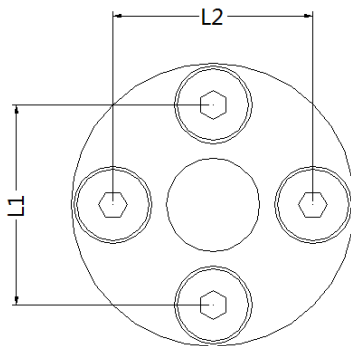
W (mm)	L (mm)	W (mm)	A (mm)	Nr.-NO.
4	18	2	0.05	OCT-22-W4-A005
			0.1	OCT-22-W4-A01
			2	OCT-22-W4-A2
5	18	2	0.05	OCT-22-W5-A005
			0.1	OCT-22-W5-A01
			2	OCT-22-W5-A2
6	18	2	0.05	OCT-22-W6-A005
			0.1	OCT-22-W6-A01
			2	OCT-22-W6-A2
8	18	2	0.05	OCT-22-W8-A005
			0.1	OCT-22-W8-A01
			2	OCT-22-W8-A2

W (mm)	L (mm)	W (mm)	A (mm)	Nr.-NO.
10	18	2	0.05	OCT-22-W10-A005
			0.1	OCT-22-W10-A01
			2	OCT-22-W10-A2
12	18	2	0.05	OCT-22-W12-A005
			0.1	OCT-22-W12-A01
			2	OCT-22-W12-A2
14	18	2	0.05	OCT-22-W14-A005
			0.1	OCT-22-W14-A01
			2	OCT-22-W14-A2
16	18	2	0.05	OCT-22-W16-A005
			0.1	OCT-22-W16-A01
			2	OCT-22-W16-A2

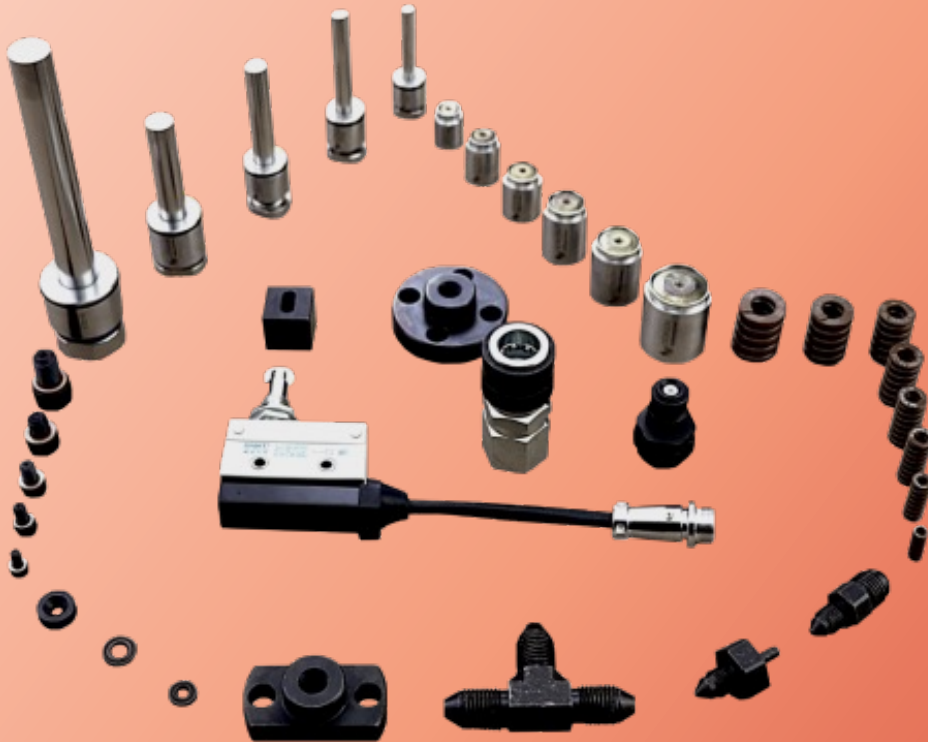
OCT- 23- ...

Cylinder plate

Mat.: P20



D (mm)	D1 (mm)	H (mm)	L1 (mm)	L2 (mm)	M (mm)	Nr.-NO.
34	11.2	4	24	24	M4*0.8	OCT-23-D34
36	13.2	4	26	26	M4*0.8	OCT-23-D36
38	15.2	4	28	28	M4*0.8	OCT-23-D38
40	17.2	4	30	30	M4*0.8	OCT-23-D40
42	19.2	4	32	32	M4*0.8	OCT-23-D42
48	25.2	4	38	38	M4*0.8	OCT-23-D48



OCTAGON AUTOMATION Pte. Ltd.

68 Circular Road, #02-01
049422
Singapore

contact@octagonct.com

www.octagonct.com

PT. OCTAGON AUTHENTIC TEKINDO

B27 Ruko cosmo, Jl. Tangkuban
perahu. Lippo Cikarang. 17550
Indonesia